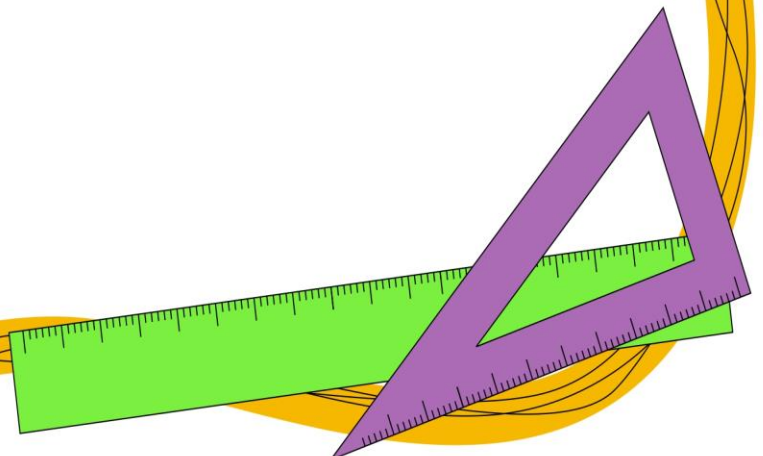
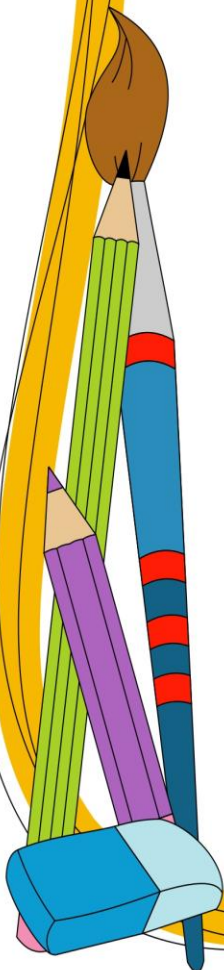


**Leighfield**  
Primary School

Learning for Life

# Transition Book

Year 3



We are all really looking forward to welcoming you to Leighfield Primary School at the end of the summer. We share throughout this book, the people and places you may like to look at over the holidays.

This is the front of the school.



This is the playground where you will line up every morning.



This is your Class Teacher – Miss Dickson



This is your classroom.





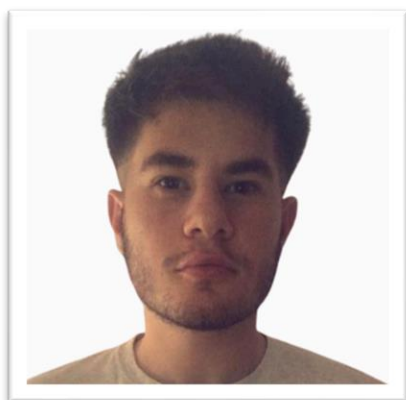
This is where you will hang your bags/coats and access the Year 3/4 toilets.



This is the dining hall where you will have your lunch and our lunch staff team.



Mr Crowden is our sports coach, and he teaches PE.



Miss Atkinson provides teaching support in the classroom each week.



## Emotional Literacy Support Assistants (ELSAs)



Mrs Laird



Mrs Blackford



Bella  
School Dog

## Senior Leadership Team



Mrs Eaton - Head Teacher



Mrs Wallace – Deputy Head and SENDCo

## Office Staff



Miss Perera



Mrs O'Brien