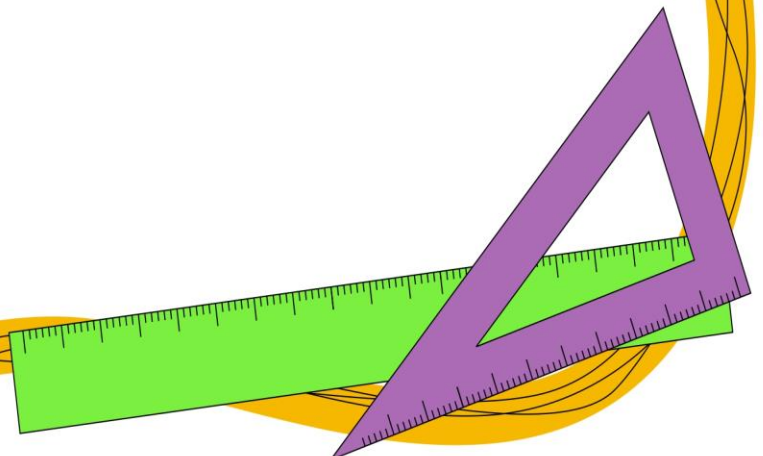
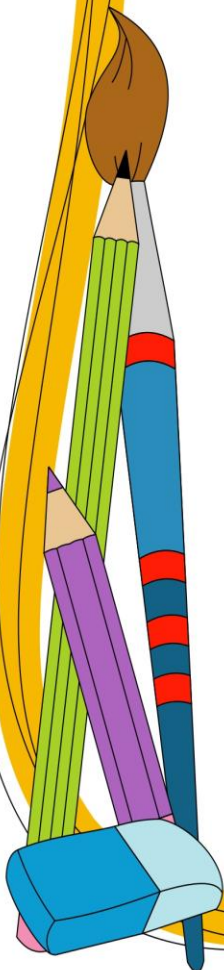


**Leighfield**  
Primary School

Learning for Life

# Transition Book

EYFS



We are all really looking forward to welcoming you to Leighfield Primary School and share throughout this book, the people and places you may like to look at before joining us at the end of the summer.

This is the front of the school.



This is the gate where you will come in every morning.



You will go home from here as well.



We are your Class Teachers



Mrs Wallace



Mrs Darlington

This is your playground and where you will hang your bags and coats.



These are the classroom toilets.



This is your new classroom.





Mr Crowden is our sports coach, and he teaches PE.



Miss Atkinson provides teaching support in the classroom each week.



### Emotional Literacy Support Assistants (ELSAs)



Mrs Laird



Mrs Blackford



Bella – School Dog

Mrs Eaton is the Head Teacher



Office Staff



Miss Perera



Mrs O'Brien

This is the dining hall where you will have your lunch and our lunch staff team.

